

kendo

New collection.

Stella

2025



STELLA COLLECTION

05	DESIGNED BY KUTARQ STUDIO
07	STELLA CONCEPT
08	DINING TABLES
16	COFFEE TABLES
32	MEASUREMENTS / FINISHES



DESIGNED BY

Kutarq Studio

Stella is the new table collection by Kutarq Studio for Kendo. Leading Kutarq Studio, architect and designer Jordi López Aguiló designs lighting, objects and furniture with a unique and pragmatic perspective. Each project involves a methodical process that emphasizes both material and research. With the constant challenge of revealing the “soul” behind his objects, he offers their users not just an aesthetic piece but rather a design with personality and a life of its own.





STELLA CONCEPT

A base of soft, sinuous shapes that recall nature is Stella table's trademark. From its combination with a circular tabletop, this singular collection of coffee and dining tables is generated.

Stella dining table Ø160x74cm finished in
natural ash.

2025

DINING TABLES

New collection.





Stella's base is a robust and totemic piece shaped like a rounded star. It is completed with a circular top to fulfill the function of a coffee or dining table, achieving geometric balance between the organicity of the support and the purity of the circle.

DINING TABLE

Ø120x74cm

Black marble | Tostated oak



On these pages, Stella dining table
Ø140x74cm finished in ash ash.



Stella table is not only a functional piece, but also a sculptural object that transforms any dining room into a unique space.



DINING TABLE

Ø120x74cm

Burgundy ash



Coffee table /

Ø70cm

Burgundy ash

Coffee table /

Ø100cm

Smoked grey glass | Black ash

Coffee table /

Ø100cm

Travertine marble |
Natural oak

Coffee table /

Ø70cm

Natural ash

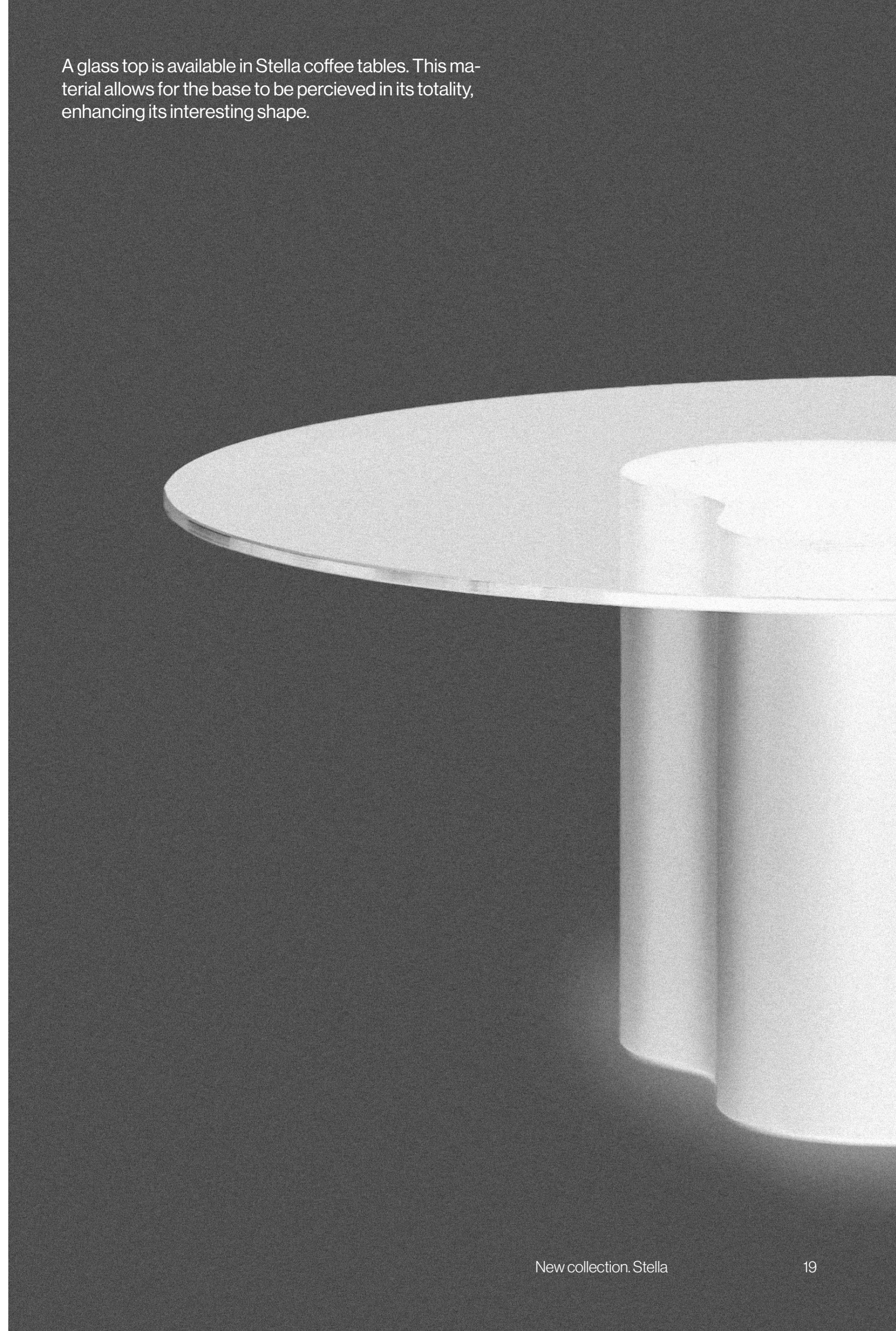
Coffee table /

Ø120cm

Smoked grey glass | Ash ash



A glass top is available in Stella coffee tables. This material allows for the base to be perceived in its totality, enhancing its interesting shape.





Coffee tables / Glass tops,
black and burgundy ash bases

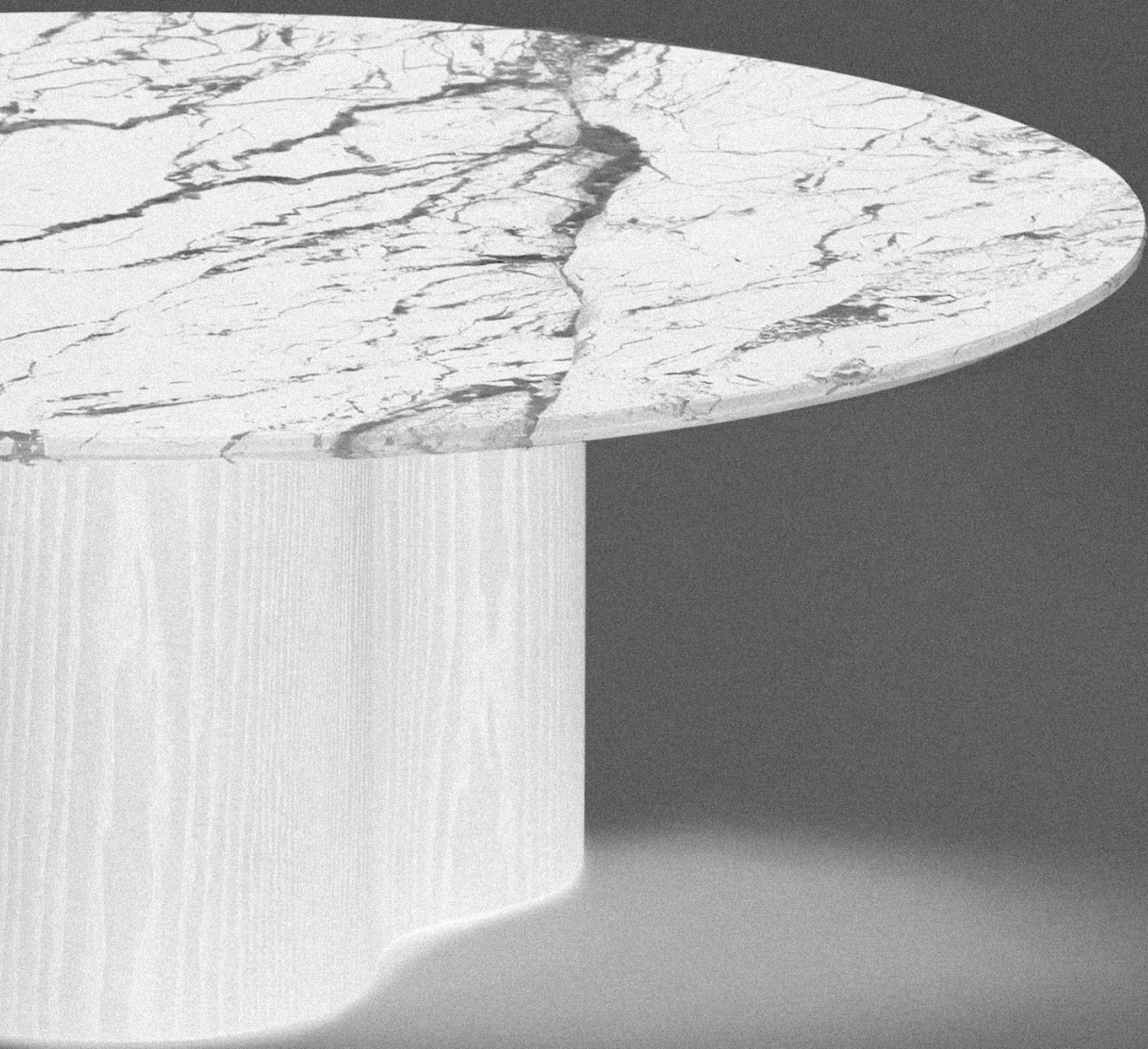


Coffee tables / Glass tops, black, ash and
natural ash bases





Left to right: Stella Ø70x38cm smoked grey glass / black ash, Stella Ø100x38cm smoked grey glass / natural ash, Stella Ø120x38cm smoked grey glass / ash ash.



Stella tabletops are also offered in white, black or travertine marble. This material brings an elegant and timeless touch that elevates any space.

On this page, Stella Ø120x38cm with a travertine top and natural oak base. On the right, Stella Ø100x38cm with a travertine marble top and ash ash base.





One of Stella's distinct characteristics is its wide range of finishes for the base as well as the tabletop. Many possibilities at hand to explore this table's full potential and make it suitable to any interior space.

From top to bottom, Stella Ø70x38cm with white marble top/natural ash base, Stella Ø70x38cm with black marble top/ash ash base, and Stella Ø100x38cm travertine marble top/natural oak base.



Stella Ø70x38cm in natural, black, and burgundy ash.

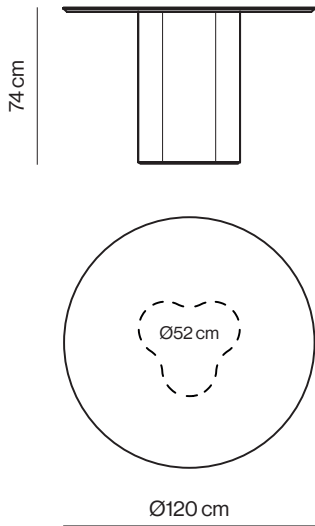


Stella tables are made using a complex manufacturing process performed in an artisanal way, taking care of every detail in order to offer our clients a well-finished piece of furniture of the highest quality.

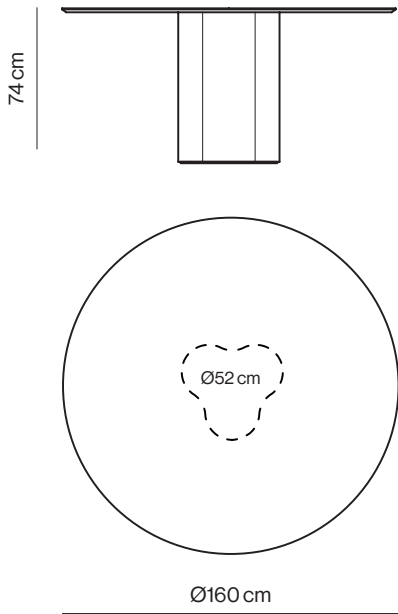
The Stella dining table is available in three sizes. It comes in oak or ash veneer, and the Ø120cm top is also available in marble. To ensure stability and durability, a metal frame is integrated into the base.



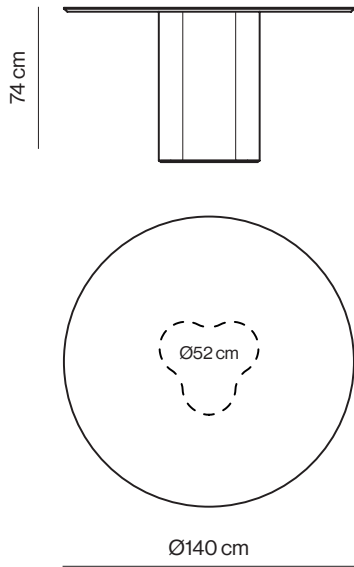
STM-27



STM-67



STM-47



STM - 47



STM - 27



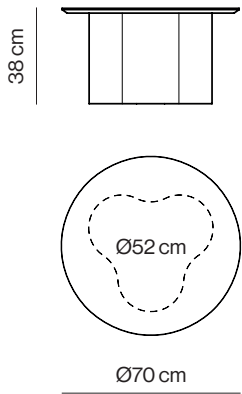
STM - 67



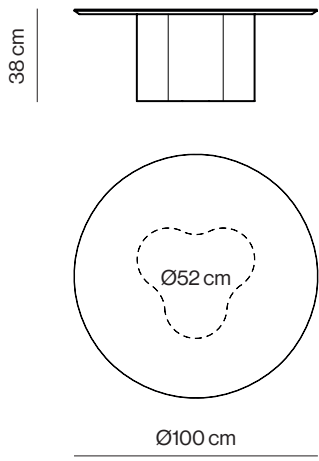
The Stella coffee table is available in three sizes. The base comes in lacquer, oak, or ash wood finishes, and can be paired with a lacquer, oak, ash, marble, or glass top.



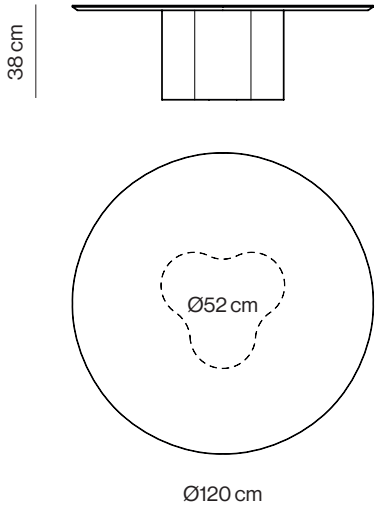
ST-73



ST-03

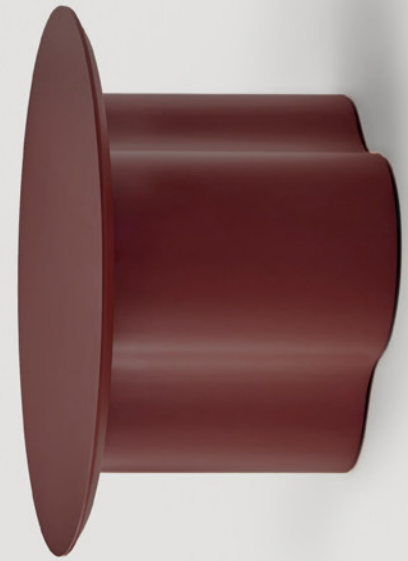


ST-23





ST-73



New collection. Stella

Stella coffee tables. On the left page, Ø70cm ash ash. On the right, Ø70cm ocean lacquer, Ø100cm smoked grey glass/graphite lacquer, Ø70cm burgundy lacquer.

ST - 03



ST - 23



New collection.

Stella

2025

kendo